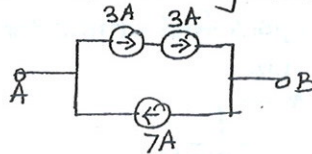


Date: 22/09/2014	Test No: 1	Branch: All
Semester: 1	Subject: BEE	Marks: 20

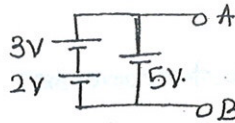
All questions compulsory

Q.1 a) Draw v-i characteristics of ideal and practical voltage source. (2m)

b) Replace the following circuit by single current source. (2m)

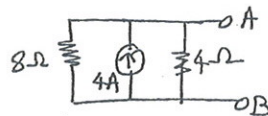


c) Replace the following circuit by single voltage source. (2m)

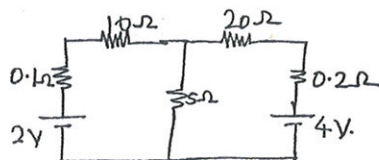


d) state maximum power transfer theorem. (2m)

e) Convert following circuit into a single voltage series with a resistance. (2m)

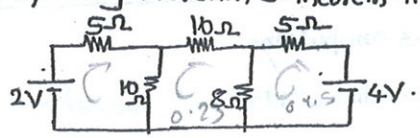


Q.2 Determine the current through 5Ω Resistance using superposition theorem. [5m]

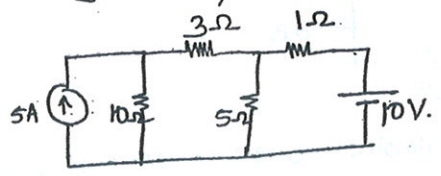


- OR -

Q.2 By using thevenin's theorem find current through $8\ \Omega$ Resistance. (5m)



Q.3 Using Nodal analysis find current through $3\ \Omega$. [5m]



-OR-

Q.3 Derive equations for Delta to star conversion. [5m]

