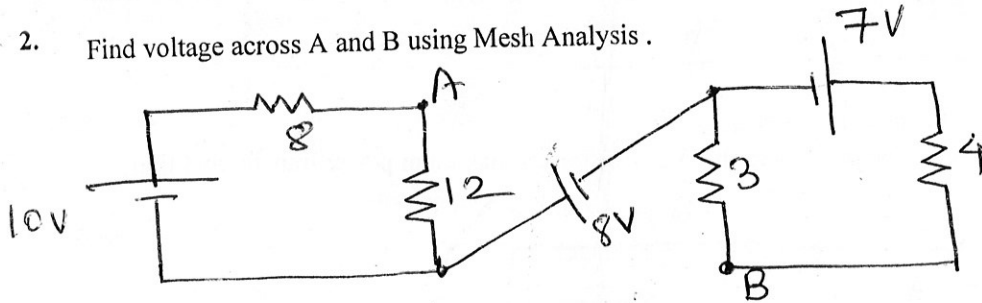


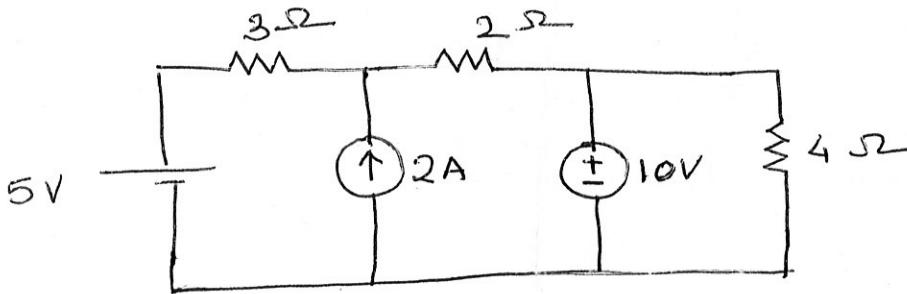
- Instructions:** 1) Question No. 1 is compulsory.
2) Attempt any three from remaining questions
3) DO NOT ATTEMPT EXTRA QUESTIONS (STRICTLY).

1. State Maximum Power Transfer Theorem and Derive the condition for maximum power transfer and value of Maximum power. (05)

2. Find voltage across A and B using Mesh Analysis. (05)



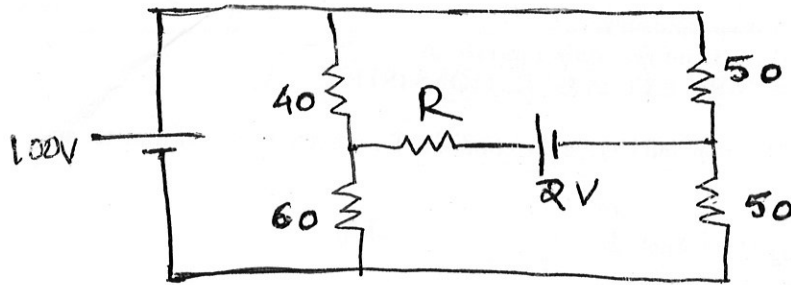
3. Using Superposition Theorem find current through 2 ohm. (05)



P.T.O/—

4. Find value of R for maximum power transfer, also find the value of maximum power.

(05)



5. Find the current through $1\ \Omega$ by Thevenin's Theorem. Also find the value of resistor which can replace the $1\ \Omega$ resistor for maximum power transfer and find the value of maximum power

(05)

